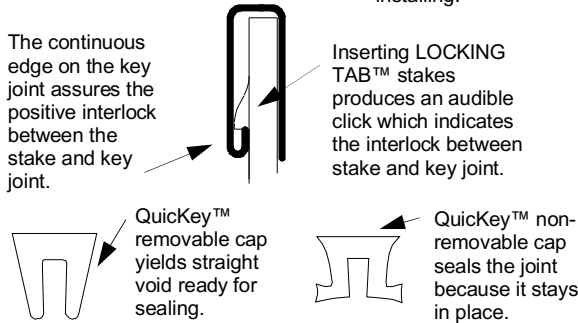
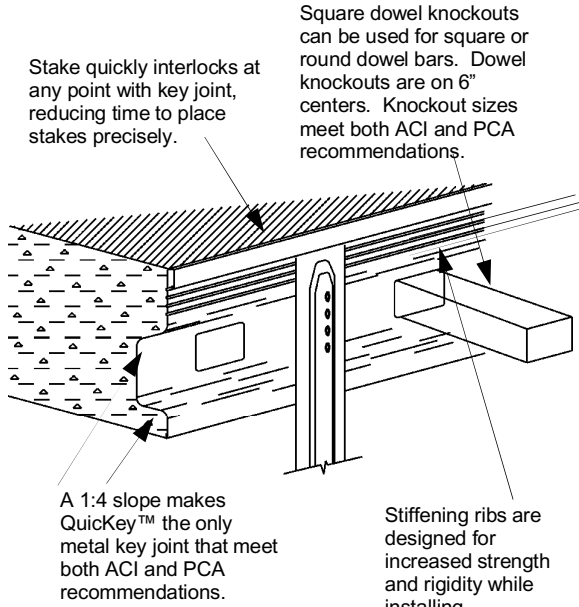


QuicKey™ (US Patent Number 6502359)
Metal Keyed Control Joint System



Advantages:

- QuicKey™ is the only galvanized joint system that features knockouts for square dowels, which provide better load transfer over round dowels and also reduce edge curl of the slab.
- Knockout sizes meet both ACI and PCA recommendations for the design of tongue and groove key joint.
- Tongue and groove design provides excellent load transfer characteristics for heavy, wheeled traffic and prevents uneven settling associated with aggregate interlock
- LOCKING-TAB™ stakes provide a positive interlock between stake and key joint that eliminates floating or rising from the stake, minimizing high spots. The stake profile features a non-twist design which allows the stake to be driven at a straight angle.
- Saves on installation time ... stake quickly interlocks at any point with key joint, reducing time to place stakes precisely.
- Eliminates costly form stripping and saw cutting. Replaces the slow and costly method of checker-board placement of concrete.

Installation:

- Space joints as indicated on drawings, as called for in specifications or as recommended by either ACI or PCA.
- With elevation checked by instrument, stretch a line the length of the joint and set the line at the finished elevation. If cap is used, drive stakes 3/16" deeper.
- Install intermediate stakes on 2' centers ... 5 stakes per 10' section. Drive stakes to bottom of the line. Additional stakes shall be used with the remaining slots for support if soil conditions require.
- Hang key joint on stakes and push downward. Locking tab stakes will produce an audible click indicating a positive interlock. Stake clips and splices are available if needed.
- With continuous placement, concrete shall be placed to full depth simultaneously on both sides of joint. When QuicKey™ is used as a bulkhead or in a construction joint, knockouts shall be bent at 45 degrees into the concrete.
- Finish the concrete flush to the top edge of the key joint. Be sure the concrete fills key without void or honeycomb.

Product Specifications:

General:

- Construction Joints
- Control Joints

QuicKey™ is a stay in place metal keyed control joint former for use in concrete flatwork as a control or construction joint. When indicated on drawings or called for in specifications, the contractor shall furnish and install QuicKey™ joint system as manufactured by BoMetals, inc., Carrollton, Georgia.

Material:

QuicKey™ is manufactured of 24 gauge, hot dipped, galvanized steel. It is furnished in 10' lengths for 4", 5", 6" and 8" and 10"-12" slabs. Each piece is punched on 6" centers with dowel rod knockouts and each piece has ribs formed into it for rigidity. Special manufacturing techniques produce a continuous edge that assures the key joint has a positive lock with the tab on the stake. LOCKING-TAB™ stakes are manufactured from 13 gauge HRPO steel and are available in 12", 15", 18", 24" and 30". The removable cap measures 13/32" x 1/2". The non-removable cap measures 5/8" x 5/8". Both are manufactured of PVC compounds.

Dimensional Specifications:

Slab Thickness	A	B	C	Knockout Size
4"	3 1/8"	2"	3/4"	7/8" x 1 3/8"
5"	4 1/8"	2 1/2"	3/4"	7/8" x 1 3/8"
6"	5 1/8"	3"	3/4"	1 1/4" x 1 1/2"
8"	7 1/8"	4"	1"	1 1/4" x 1 1/2"
10" - 12"	9 1/8"	5"	1"	1 1/4" x 1 1/2"

141 Hammond Street • Carrollton, Georgia 30117 • 770.832.2000 • 800.862.4835 • FAX 770.832.2095
Visit our website @ www.bometals.com • Address email to info@bometals.com